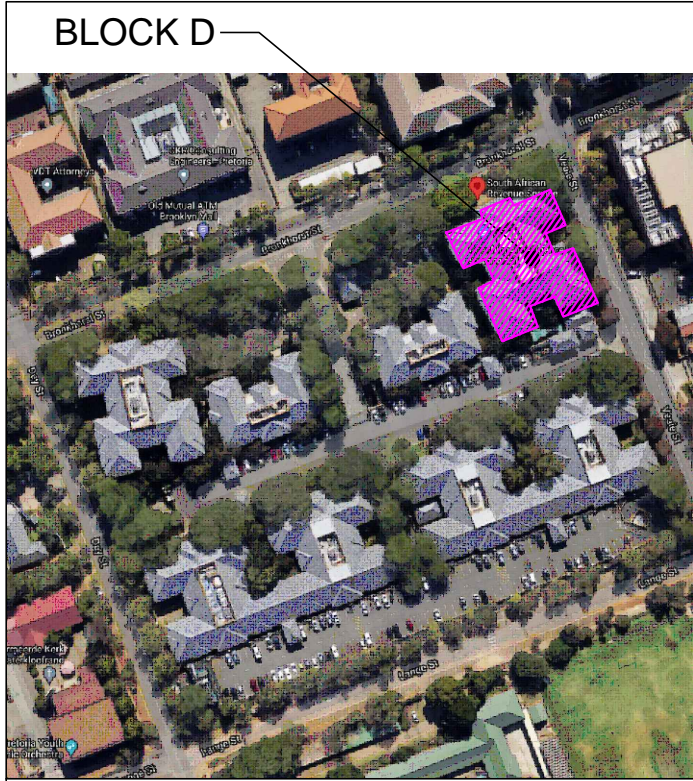


Local Authority stamp



SITE LOCATION

FIRE SERVICES DESIGN SUMMARY SCHEDULE				
1 OCCUPANCY INFORMATION				
1.1 FLOOR AREA:	1125	m <sup>2</sup>	OCCUPIED	
1.2 OCCUPANCY CLASS:	61		OFFICE	
1.3 POPULATION:	1/ SEAT	= 104	NUMBER OF PEOPLE	
1.4 ROUTES OF ESCAPE required:			1-off 1281mm & 1-off 1060mm wide	
2 FIRE PROTECTION EQUIPMENT				
2.1 FIRE HYDRANT:	1/ 1000	m <sup>2</sup> = 1	REQUIRED, 90 METERS APART	
2.2 FIRE HOSE REEL:	1/ 500	m <sup>2</sup> = 2	REQUIRED, WITH 30 METER LONG HOSES	
2.3 EXTINGUISHERS:	1/ 200	m <sup>2</sup> = 6	REQUIRED, 4.5 kg DCP TYPE	
2.4 SPRINKLER PROTECTIONS:	NO	NOT REQUIRED		
3 RELATED SERVICES				
3.1 FIRE DETECTION:	YES	THROUGHOUT THE BUILDING IN ACCORDANCE WITH SANS 10139:2012 (Category L1)		
3.2 SMOKE VENTILATION:	NO	COMPARTMENTALISED		

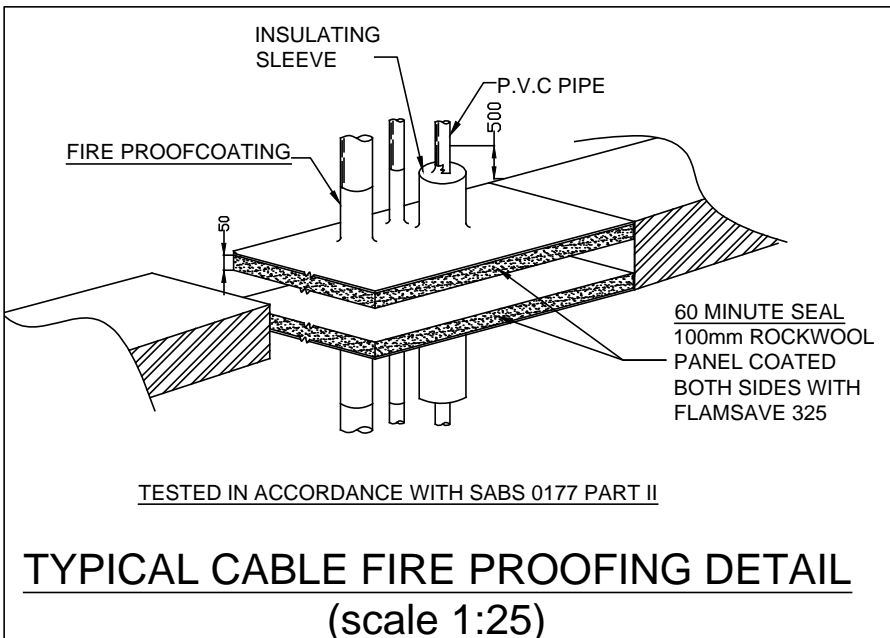
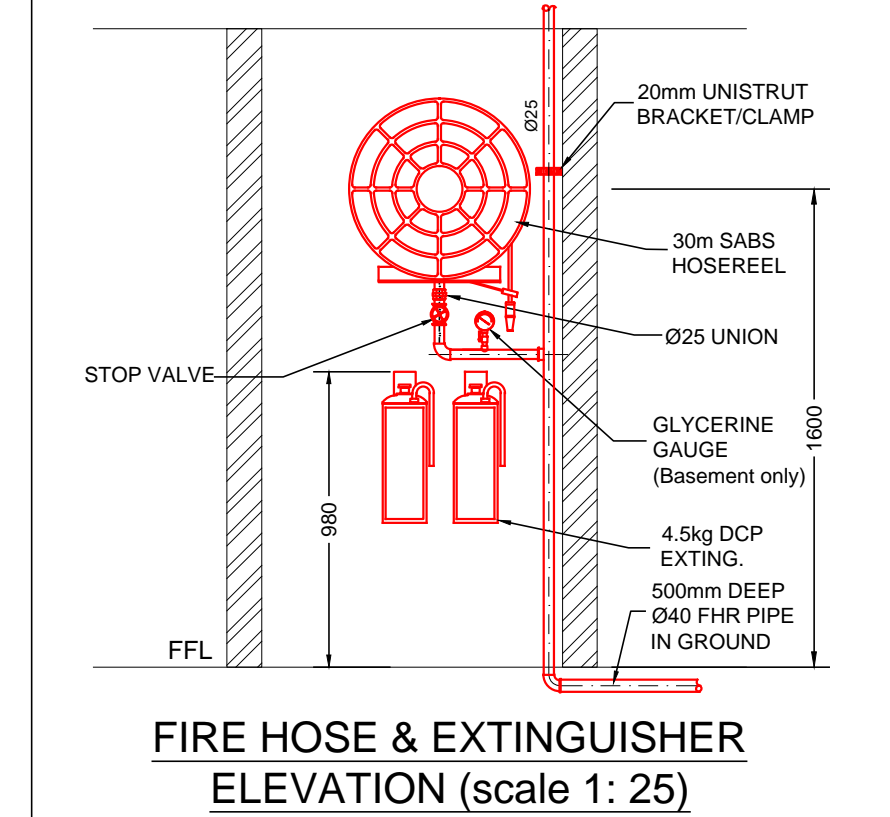
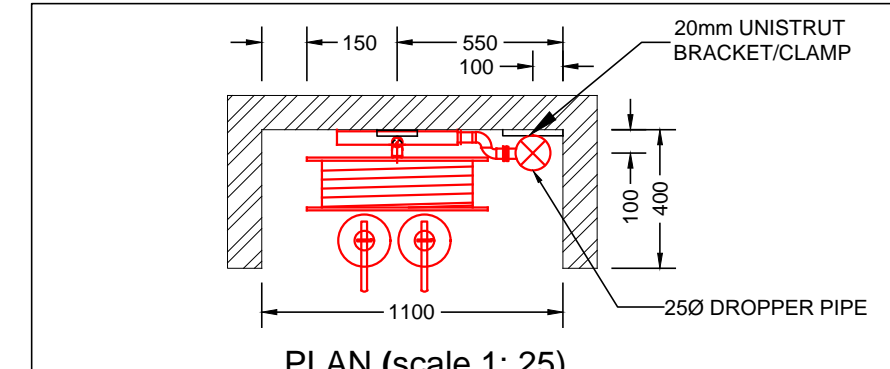
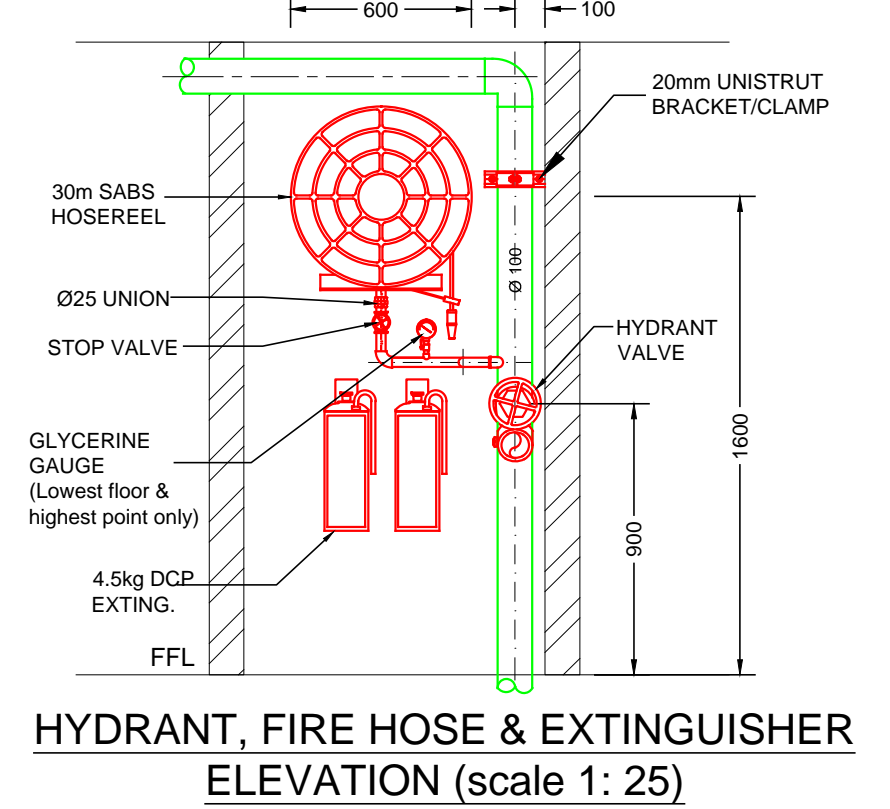
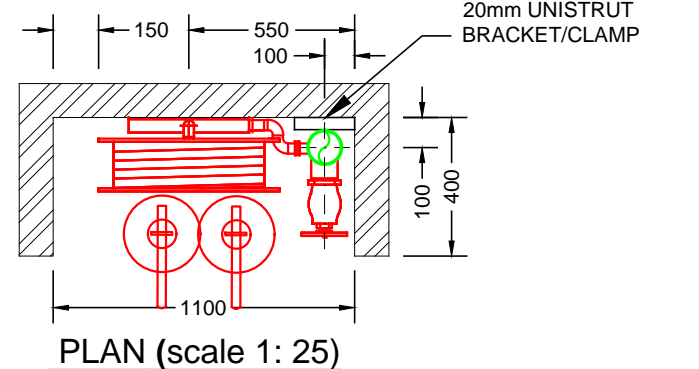
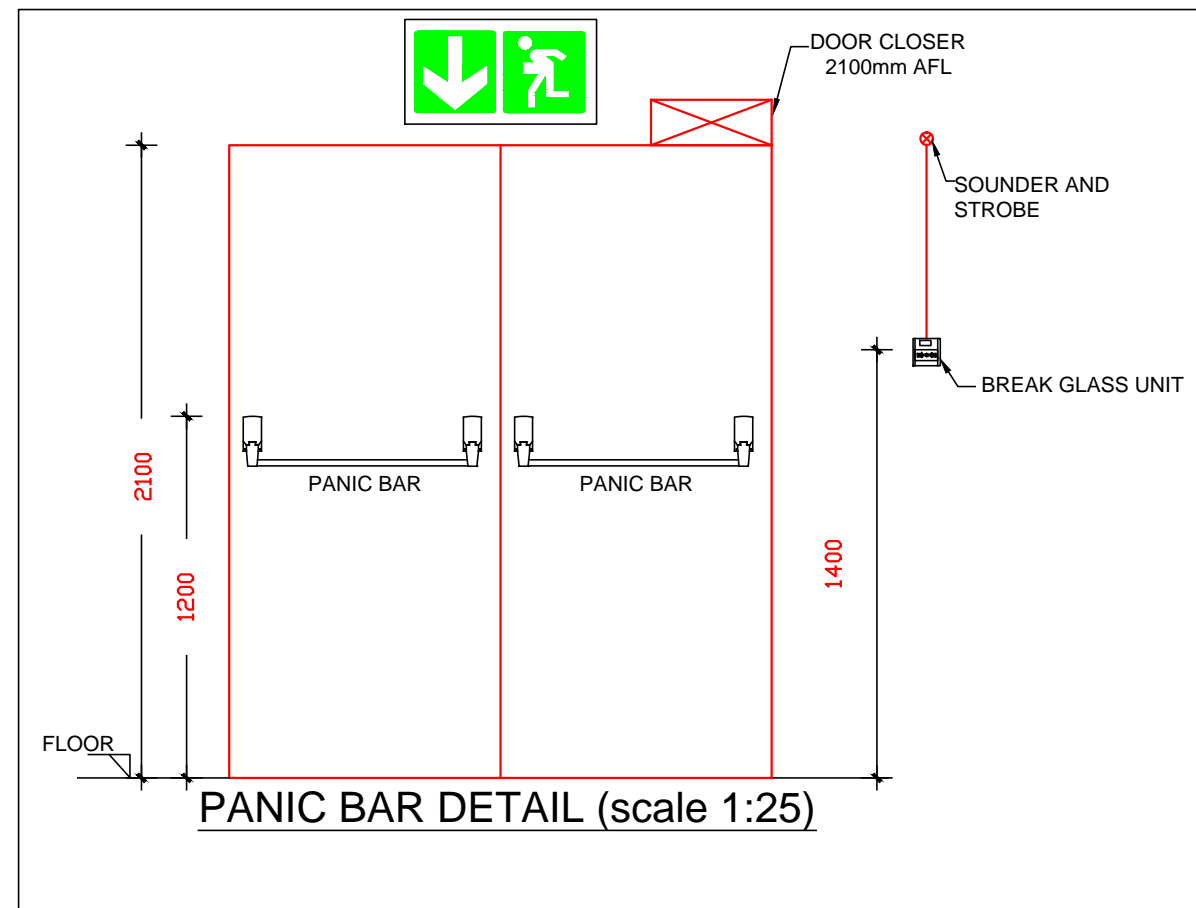
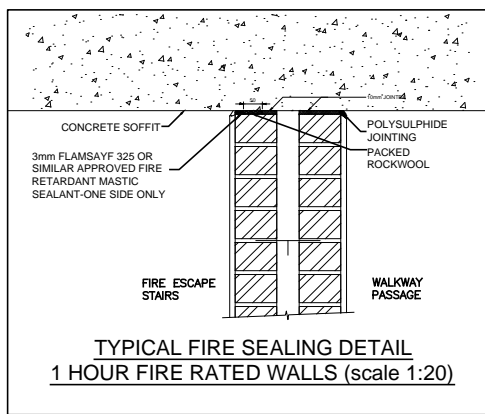
SCOPE OF WORKS CLARIFICATION

- FIRE CONTRACTOR**
  - SERVICE AND RE-USE EXISTING FIRE EXTINGUISHERS AND 2-OFF FIRE HOSE REELS.
  - SUPPLY & INSTALL NEW FIRE FIGHTING EQUIPMENT AS INDICATED ON PLAN.
  - SUPPLY & INSTALL NEW FIRE SIGNAGE AS INDICATED ON PLAN.
  - NEW EVACUATION PLANS & PROCEDURES.
- ELECTRICAL CONTRACTOR**
  - SUPPLY AND INSTALL EMERGENCY LIGHTING THROUGHOUT THE SPACE AS SHOWN ON PLAN, c/w BATTERY BACKUP.
- BUILDER**
  - SUPPLY AND INSTALL PANIC BARS c/w WHITE ON GREEN "PUSH BAR TO OPEN" SIGN
  - PROVIDING PENETRATIONS THROUGH CEILINGS AND WALLS AND MAKING GOOD THEREOF.
  - FIXING OF EXTINGUISHER BACKING BOARDS TO WALLS SUPPLIED BY FIRE CONTRACTOR.
  - SUPPLY & INSTALL NEW FIRE DOORS C/W 25mm STEEL FRAME AND DOOR CLOSER.
  - FIRE SEALING OF PENETRATIONS THROUGH FIRE WALLS.

CLOUDED INDICATES EXISTING EQUIPMENT

FIRE SIGNS & EQUIPMENT COUNT															
SYMBOL	E1	E2	E3	E6	E7	F4	F5	F6	F1	F2	F3	F13	F16	F19	F45
REFERENCE	E1	E2	E3	E6	E7	F4	F5	F6	F1	F2	F3	F13	F16	F19	F45
QUANTITY	7	7	4	1	1	1	2	1	1	2	3	3	-	-	1

FIRE DOOR SCHEDULE									
DOOR TAG	SWING	FIRE RATING	WIDTH (mm)	HEIGHT (mm)	NORMAL DOOR		PANIC BAR	DOOR CLOSER	HOLD OPEN
					OPEN	CLOSED			
FD_1	ONE WAY	60 minute	815	2100	N/A	YES	NO	YES	NO



FIRE INSTALLATION NOTES

**PORTABLE FIRE EXTINGUISHERS**  
FIRE EXTINGUISHERS SHALL BE 4.5kg AND 9kg DRY CHEMICAL POWDER TYPE AND SHALL COMPLY WITH SABS 810.  
ALL FIRE EXTINGUISHERS SHALL BE MOUNTED ON WOODEN BACKING BOARDS.

**FIRE HOSE REELS**  
FIRE HOSE REELS SHALL CONFORM TO SABS 543.  
ALL FIRE HOSE REELS SHALL BE COMPLETE WITH 30 METERS OF HOSE AND SHALL HAVE A MINIMUM FLOW RATE OF 0.5 l/s AT 300 kPa.

**FIRE HYDRANTS**  
FIRE HYDRANTS SHALL COMPLY WITH SABS 543 AND HAVE A MINIMUM FLOW RATE OF 20 l/s AT 300 kPa.

**PIPING**  
NO PIPEWORK TO BE EMBEDDED IN SCREEN OR CONCRETE FLOORS.  
ALL PIPEWORK SHALL CONFORM TO SABS 62 (STEEL, MEDIUM).

THE DISTANCE BETWEEN PIPE SUPPORT BRACKETS FOR THE HORIZONTAL & VERTICAL PIPEWORK, SHALL NOT EXCEED THE FOLLOWINGS:

NOMINAL DIAMETER	MAXIMUM SPACING
< 65 MM	4M
> 65MM	<100MM
	6.1M

PIPING SHALL BE PROPERLY CLEANED OFF SITE, FROM RUST & LOOSE MILL SCALE WITH A HARD WIRE, & DECREASED PRIOR TO APPLICATION OF A RED OXIDE PRIMER/FINAL COATS OF PAINT TO BE 2 OFF SIGNAL RED, HIGH GLOSS ENAMEL TO SABS 630.  
ALL BRACKETS, SUPPORTS & FITTINGS TO BE GALVANIZED.  
ALL SCREWED JOINTS TO COMPLY WITH BS 21 OR SIMILAR.  
SEALINGS OF JOINTS WILL BE WITH HEMP, STOGG OR PTFE TAPE.  
HYDRAULIC PRESSURE TESTING SHALL BE DONE TO 15 BAR FOR A PERIOD OF 24 HOURS.

**SYMBOLIC SAFETY SIGNAGE**  
SYMBOLIC SAFETY SIGNAGE SHALL COMPLY WITH SABS 1186 PART V AND SHALL BE OF THE PHOTOLUMINESCENT TYPE.  
SIGNAGE SHALL BE INSTALLED SUCH AS TO CLEARLY INDICATE THE POSITIONS OF ALL FIRE EQUIPMENT AND ESCAPE ROUTES.  
EACH FLOOR LEVEL SHALL BE NUMBERED IN THE ESCAPE STAIRS.  
SIGNAGE ON DRAWING IS AN INDICATION OF SIGNAGE REQUIRED.  
FINAL SIGNAGE TO BE DETERMINED ON SITE.  
ADDITIONAL SIGNAGE TO BE ADDED SHOULD IT BE REQUESTED BY THE LOCAL AUTHORITIES.  
FINAL FIRE SIGNAGE IS TO BE DETERMINED ON SITE WITH THE COUNCIL'S FIRE OFFICER.

**FIRE DOORS**  
FIRE DOORS OF THE RATING AND WIDTH AS INDICATED ON THE DRAWINGS, SHALL BE INSTALLED AND SHALL COMPLY WITH SANS 1253.  
ALL FIRE DOORS TO BE FITTED WITH SELF CLOSING MECHANISMS.

**FIRE ALARM / DETECTION**  
FIRE DETECTION AND ALARM SYSTEM SHALL BE INSTALLED AS INDICATED ON THE DRAWINGS AND IN ACCORDANCE WITH SANS 10139.

**ESCAPE DOORS**  
ALL ESCAPE DOORS SHALL BE COMPLETE WITH FIRE ESCAPE IRONMONGERY.


**FIRE ESCAPE ROUTES**  
FIRE ESCAPE ROUTES, INCLUDING CORRIDORS AND STAIRWAYS SHALL HAVE MINIMUM WIDTH OF 1500mm UNLESS SHOWN OTHERWISE.  
ALL ESCAPE ROUTES SHALL HAVE A FIRE RESISTANCE AS INDICATED.  
ALL EMERGENCY ROUTES SHALL HAVE A FIRE RESISTANCE AS INDICATED ON THE DRAWINGS.

FIRE SERVICES LEGEND			
	BREAK GLASS UNIT		HOSE REEL
	FIRE HYDRANT		4.5kg DCP FIRE EXTINGUISHER
	DIRECTIONAL ARROW		FIRE ESCAPE
	60MIN FIRE RATED LIFT LANDING DOOR		
	60 MINUTE FIRE RATED WALL		

FIRE DESIGN CONFIRMATION			
DEEMED TO SATISFY WITH SANS 10400		N/A	
RATIONAL ASSESSMENT		YES	
RATIONAL DESIGN EQUIVALENT OR SUPERIOR TO SANS 10400		N/A	

ISSUE DATE: 2021-06-02  
REVISION: A  
X FOR INFORMATION  
FOR APPROVAL  
FOR TENDER  
FOR CONSTRUCTION  
AS-BUILT

REVISIONS				
No	Date	Description	Rev By	Ckd By
A	02/06/2021	ISSUED FOR INFORMATION	S.M	H.R

		09 Plantanus Street Kuilsrivier 7580	
		Cell.: (072) 948 4470 Tel.: (021) 903 1407 Email: info@consultech.co.za	
PROJECT	LAHA LA SARS - BLOCK D		
	BROOKLYN		
DWG TITLE	SECOND STOREY - PROPOSED		
	FIRE SERVICES LAYOUT		
DWG NUMBER	21B09-F-504-06		REV. A
DESIGNED BY	S. MAFUYA	SCALE	1:100 @ A1
CHECKED BY	H.D ROUX	ECSA NUMBER	201070151
APPROVED BY	H.D ROUX	ECSA NUMBER	201070151
COPYRIGHT AND RIGHT OF REPRODUCTION OF THIS DRAWING OR ANY PORTION THEREOF IS RESERVED BY THE ENGINEERS.			

SECOND STOREY - PROPOSED FIRE SERVICES LAYOUT (Scale 1:100)